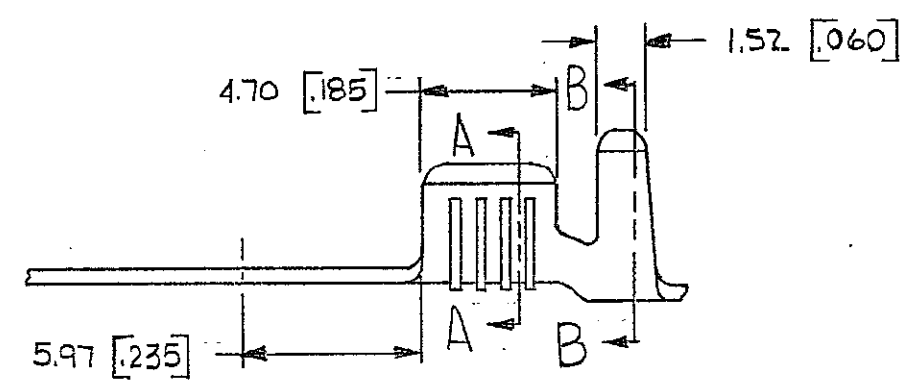
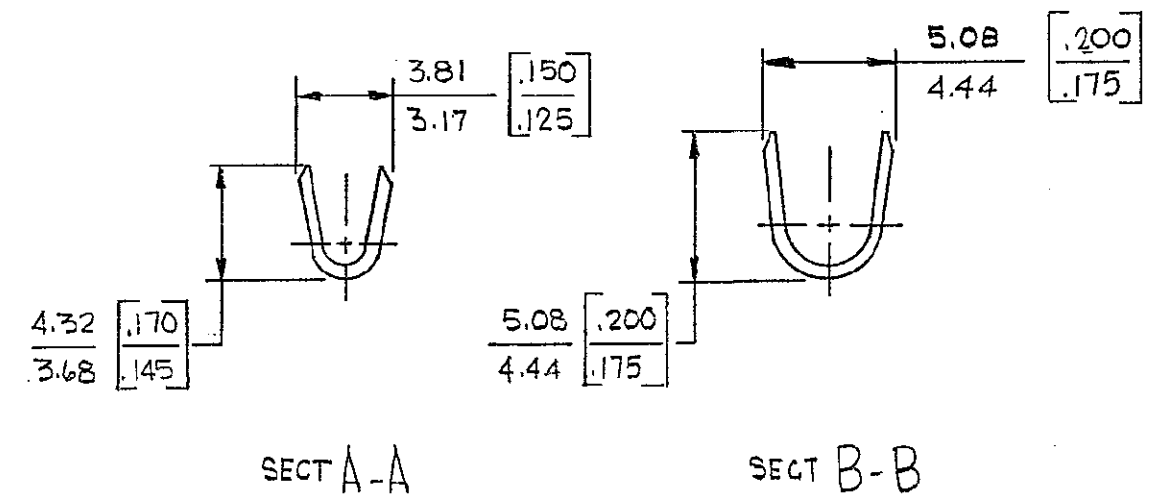
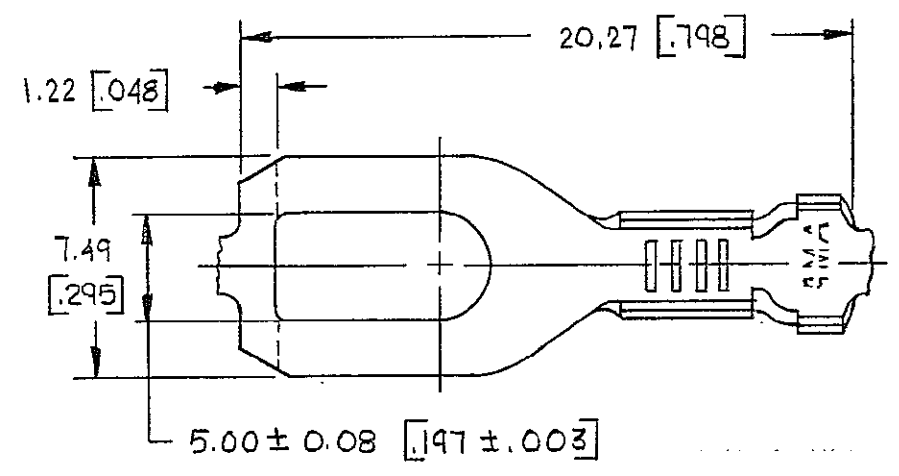
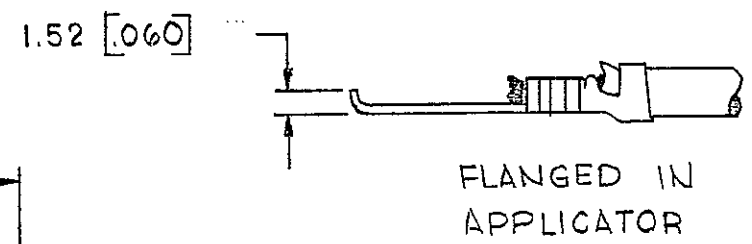


© COPYRIGHT 19 64 BY AMP INCORPORATED, HARRISBURG, PA.  
ALL INTERNATIONAL RIGHTS RESERVED. AMP INCORPORATED PRODUCTS  
COVERED BY U. S. AND FOREIGN PATENTS AND/OR PATENTS PENDING.

REVISIONS						
P	F	ZONE	LTR	DESCRIPTION	DATE	APPROVED
✓	✓		D	REDRAWN & REVISED A-3943	6-26-78	DTA / SS
✓	✓		E	INSUL. SUPP. LENGTH AF-0781	2-20-85	RLT / GY
✓	✓		F	REVISED AF1994	7/1/86	SS / RPF
✓	✓		G	OBS 60775-2 AF-3587	6/1/79	GY
✓	✓		H	REACTIVATE-2 PER 061A-0314-98	11SEP98	PMF / GY



#10	0.8 - 2.0mm <sup>2</sup> [8 - 14]	2.54 - 3.56 [.100 - .140]	TIN	0.46 [018] BRASS	△ 60775-2A 60775-2 △ 60775-1A 60775-1
STUD SIZE	WIRE RANGE	INSULATION RANGE	FINISH	MATERIAL	PART NO

UNLESS OTHERWISE SPECIFIED DIMENSIONS ARE IN INCHES. TOLERANCES ON: DECIMALS ±0.38 [015] ANGLES ±1.0°

CONTRACT NO  
DR D. Aden 6-26-78  
CHK S. Schaffhausen 7-25-78  
MATERIAL  
SEE TABLE  
FINISH  
SEE TABLE

AMP INCORPORATED  
Harrisburg, Pa.

NAME  
SPADE

APPD R.P. Frank 8-8-78  
APPD G. T. Hicks 8-10-78

DSGN APPD  
OTHER APPD

SIZE B  
CODE IDENT NO 00779  
DRAWING NO 60775

SCALE SHEET

- CONTINUOUS STRIP ON REELS
  - DIMENSIONS IN BRACKETS ARE IN INCHES
- △ SUFFIX LETTER MUST BE USED ONLY WHEN ORDERING APPLICATOR TOOLING.

**METRIC**